

## Monthly Weather Summary in Thailand June 2018

In June 2018, the southwest monsoon prevailed over the Andaman Sea, Thailand and the Gulf of Thailand throughout the month. During early month, the influence of the monsoon trough lay across the lower northern, upper central and northeastern parts toward the tropical storm “EWINIAR” (1804) in the upper South China Sea which making landfall at southern coast of China. After that during the middle of the month, the monsoon trough lay over the upper northern and upper northeastern parts toward the low pressure cell in the Gulf of and the low pressure cell covered upper Vietnam for few days. These caused abundant rainfall over Thailand almost the whole month, inducing above normal rainfall in the northern and northeastern parts. Although, rainfall evenly distribute in the central and eastern parts, the rainfall was lower than normal. In southern Thailand, plentiful rainfall was periodically observed especially during the middle of the month when the southwest monsoon was strong. However, monthly rainfall was higher than normal in almost parts i.e. northern part 11.3 mm (7%), northeastern part 2.1 mm (1%), southern part (east coast) 11.0 mm (10%) and southern part (west coast) 79.1 mm (25%) but otherwise it was below normal in central and eastern parts 11.8 mm (8%) and 91.2 mm (35%), respectively

**1 – 10 June :** The southwest monsoon which prevailing over the Andaman Sea, Thailand and the Gulf of Thailand strengthened during the middle and the end of the period. In addition, the monsoon trough lay across the lower northern, upper central and northeastern toward the tropical depression in the middle South China Sea. This storm developed from the active low pressure cell in the middle South China Sea which intensified into the tropical depression on June 2. After that it moved northward before reaching the tropical storm namely “EWINIAR” (1804) in the upper South China Sea in the morning of the June 6 and moved southwestward pass the coastal areas of south China to the Hainan strait in the afternoon of the same day. EWINIAR moved north-northeastward and made landfall over the south of Guangdong Province, China in the evening of June 7 prior moved into the land and downgrading into a tropical depression and the low pressure cell on June 8 and 9, respectively. These caused abundant rainfall in upper Thailand especially fairly widespread rain with heavy to very heavy rainfall in some areas in the northeastern and eastern parts. The highest daily rainfall in upper Thailand was 180.0 millimeter at So Phisai in Nong Khai province on June 10 with the occurrence of thunderstorm in Khon Kaen province on the June 3. In southern part, scattered rain with isolated heavy rainfall was observed along the east coast whereas fairly widespread rain with heavy to very heavy rainfall in some areas was found along the west coast. The maximum daily rainfall was measured at 149.9 millimeter in Phuket province at Thalang on June 4 and gusty wind was reported in Ranong province on June 9.

**11 – 20 June :** Active southwest monsoon prevailed over the Andaman Sea, Thailand and the Gulf of Thailand during the second half of the period. The monsoon trough lay over the northern and upper northeastern parts to the low pressure cell in the Gulf of Tonkin during the middle of the period. These conditions caused scattered to fairly widespread rainfall over upper Thailand nearly the whole period with heavy to very heavy rainfall in some areas. The highest daily rainfall of 186.2 mm was recorded at Banhuaymalai School in Sangkhla Buri, Kanchanaburi province on June 16. In southern part, plentiful rainfall was mainly observed during the second half of the period with fairly widespread rain and heavy to very heavy rainfall in several areas along the west coast because of active southwest monsoon. The highest daily rainfall amount was 125.2 mm at Pha To in Chumphon province on June 17 with flash floods at Surat Thani and Ranong provinces on June 17. Gusty wind was reported at Prachuap Khiri Khan province on June 16 and at Phatthalung, Nakhon Si Thammarat, Songkhla, Narathiwat, Ranong, Phang-nga, Phuket and at Satun provinces on June 17 and at Trang province on June 16 and 17 and at Krabi provinces on June 17 and 18 and at Satun province on June 19.

**21 – 30 June :** The moderate southwest monsoon which prevailing over the Andaman Sea, Thailand and the Gulf of Thailand weakened during late period. The low pressure cell covered upper Vietnam and the southeasterly wind prevailed over the northeastern, eastern and the Gulf of Thailand during mid-period. These caused fairly widespread rainfall in the northern and northeastern parts almost the whole period with heavy to very heavy rainfall in some areas during the middle of the period while rainfall in the central and eastern parts was mainly observed during the middle of the period. The maximum daily rainfall was recorded in upper Thailand was 122.3 mm at Borabue in Mahasarakham province on June 25. Southern Thailand experienced scattered rain with heavy to very heavy rainfall in some areas along the east coast whereas fairly widespread rain with isolated heavy to very heavy rainfall in some areas during the middle and the end of the period along the west coast. The highest daily rainfall was 209.8 mm at Phuket Airport in Thalang, Phuket province on June 26.

---

**Note :** Rainfall, temperatures and natural disasters available in this report are preliminary data.

Climatological Center  
Meteorological Development Division  
Meteorological Department

Monthly Current Report  
Rainfall and Accumulative Rainfall  
June 2018

Northern Thailand

Station	Temperature ( °c)		Rainfall (mm)		Accumulative rainfall (mm) Since 1 January	
	Mean	Above or below normal	Actual	Above or below normal	Actual	Above or below normal
Chiang Rai	27.1	-0.1	232.3	53.9	914.5	375.3
Mae Hong Son	27.8	0.2	196.5	6.0	411.5	-45.9
Phayao	27.6	0.0	89.4	-13.4	680.2	263.4
Chiang Mai	28.0	0.4	144.8	20.3	388.6	13.9
Tha Wang Pha	27.2	0.0	230.1	137.4	744.4	84.8
Nan	28.3	0.0	161.6	27.8	457.9	-1.8
Lamphun	28.0	-0.2	86.4	-37.8	476.7	132.4
Lampang	28.2	-0.1	155.2	37.7	611.6	233.4
Mae Sariang	26.7	-0.1	340.1	157.1	582.4	170.2
Phrae	28.3	0.1	88.7	-50.1	529.2	88.0
Uttaradit	29.0	0.1	200.4	-6.0	576.4	25.6
Bhumibol Dam	27.7	-0.8	164.1	57.6	505.8	105.0
Tak	28.5	0.1	136.3	8.5	468.7	85.5
Mae Sot	26.7	0.4	268.0	12.6	388.3	-111.5
Umphang	25.5	0.5	119.9	-67.6	468.5	-79.1
Phitsanulok	28.9	-0.1	169.8	4.1	546.6	110.2
Lom Sak	28.2	0.0	136.9	0.7	434.6	18.7
Phetchabun	28.7	0.5	111.9	-49.8	496.1	26.0
Wichian Buri	29.1	0.0	166.8	22.5	515.4	52.2
Kamphaeng Phet	28.7	0.3	150.4	-14.7	490.2	24.7
Over the area	27.9	0.0	167.5	11.3 7%	534.4	86.0 19%

Northeastern Thailand

Station	Temperature ( °c)		Rainfall (mm)		Accumulative rainfall (mm) Since 1 January	
	Mean	Above or below normal	Actual	Above or below normal	Actual	Above or below normal
Nong Khai	28.4	0.2	238.4	-23.9	791.6	155.6
Loei	27.8	0.0	187.1	27.5	635.0	111.8
Udon Thani	28.6	0.0	315.3	86.3	764.2	184.6
Nakhon Phanom	28.0	0.2	471.2	61.7	913.5	51.7
Sakon Nakhon	28.4	0.3	318.3	51.5	612.7	-66.5
Mukdahan	28.6	0.3	274.0	40.6	616.5	47.3
Khon Kaen	28.5	-0.1	216.7	55.1	620.4	133.0
Kosum Phisai	29.2	0.2	149.3	-28.5	624.9	126.3
Roi Et	29.3	0.6	167.5	-56.0	558.1	8.6
Chaiyaphum	28.8	0.3	94.2	-43.4	426.6	-13.9
Ubon Ratchathani	28.8	0.4	291.1	50.9	700.4	116.9
Tha Tum	28.6	-0.5	155.5	-50.6	492.0	-38.5
Surin	28.6	0.3	172.1	-32.6	509.1	-31.4
Nakhon Ratchasima	29.3	0.2	95.8	-8.7	503.8	111.6
Chok Chai	29.0	0.3	76.6	-30.7	441.2	47.3
Nang Rong	28.6	0.0	64.7	-65.0	396.8	-53.3
Over the area	28.7	0.2	205.5	2.1 1%	600.4	55.6 10%

- NOTES :
- 1) Mean temperature is the average of daily dry-bulb temperature
  - 2) "T" is trace, rainfall amount less than 0.1 mm.
  - 3) "blank" is incomplete data.
  - 4) Temperature and rainfall are preliminary data.

Monthly Current Report  
Rainfall and Accumulative Rainfall  
June 2018

Central Thailand

Station	Temperature ( °c)		Rainfall (mm)		Accumulative rainfall (mm) Since 1 January	
	Mean	Above or below normal	Actual	Above or below normal	Actual	Above or below normal
Nakhon Sawan	29.6	0.2	102.8	-34.5	358.4	-42.6
Bua Chum	29.1	0.2	189.4	73.1	798.2	402.7
Lop Buri	29.4	0.4	78.8	-45.2	578.5	181.2
Suphan Buri	29.7	0.5	67.9	-26.5	361.8	74.5
Thong Pha Phum	27.2	0.1	321.2	42.9	650.3	-25.5
Kanchanaburi	29.3	0.3	55.1	-31.3	350.5	-10.2
Bangkok Airport	29.7	0.3	92.1	-76.0	752.8	227.8
Bangkok Metropolis	29.7	0.2	159.7	2.6	739.7	168.1
Over the area	29.2	0.3	133.4	-11.8 -8%	573.8	122.0 27%

Eastern Thailand

Station	Temperature ( °c)		Rainfall (mm)		Accumulative rainfall (mm) Since 1 January	
	Mean	Above or below normal	Actual	Above or below normal	Actual	Above or below normal
Prachin Buri	29.3	0.4	202.4	-21.1	648.2	2.3
Kabin Buri	28.3	-0.1	208.2	10.3	975.4	401.0
Aranyaprathet	28.9	0.3	126.2	-37.4	567.1	64.1
Chon Buri	30.0	0.4	114.7	-33.0	579.3	110.5
Ko Sichang	29.4	0.1	63.9	-61.5	583.4	170.1
Pattaya	29.2	0.3	89.1	-29.9	434.1	19.6
Sattahip	29.1	-0.3	67.2	-62.9	497.3	12.6
Rayong	29.3	-0.1	97.3	-67.8	531.4	-41.4
Chanthaburi	28.3	0.4	531.8	19.2	1156.6	-0.7
Khlong Yai	27.3	-0.1	711.9	-118.0	1648.9	-31.6
Over the area	28.9	0.1	221.3	-40.2 -15%	762.2	70.6 10%

- NOTES :
- 1) Mean temperature is the average of daily dry-bulb temperature
  - 2) "T" is trace, rainfall amount less than 0.1 mm.
  - 3) "blank" is incomplete data.
  - 4) Temperature and rainfall are preliminary data.

Monthly Current Report  
Rainfall and Accumulative Rainfall  
June 2018

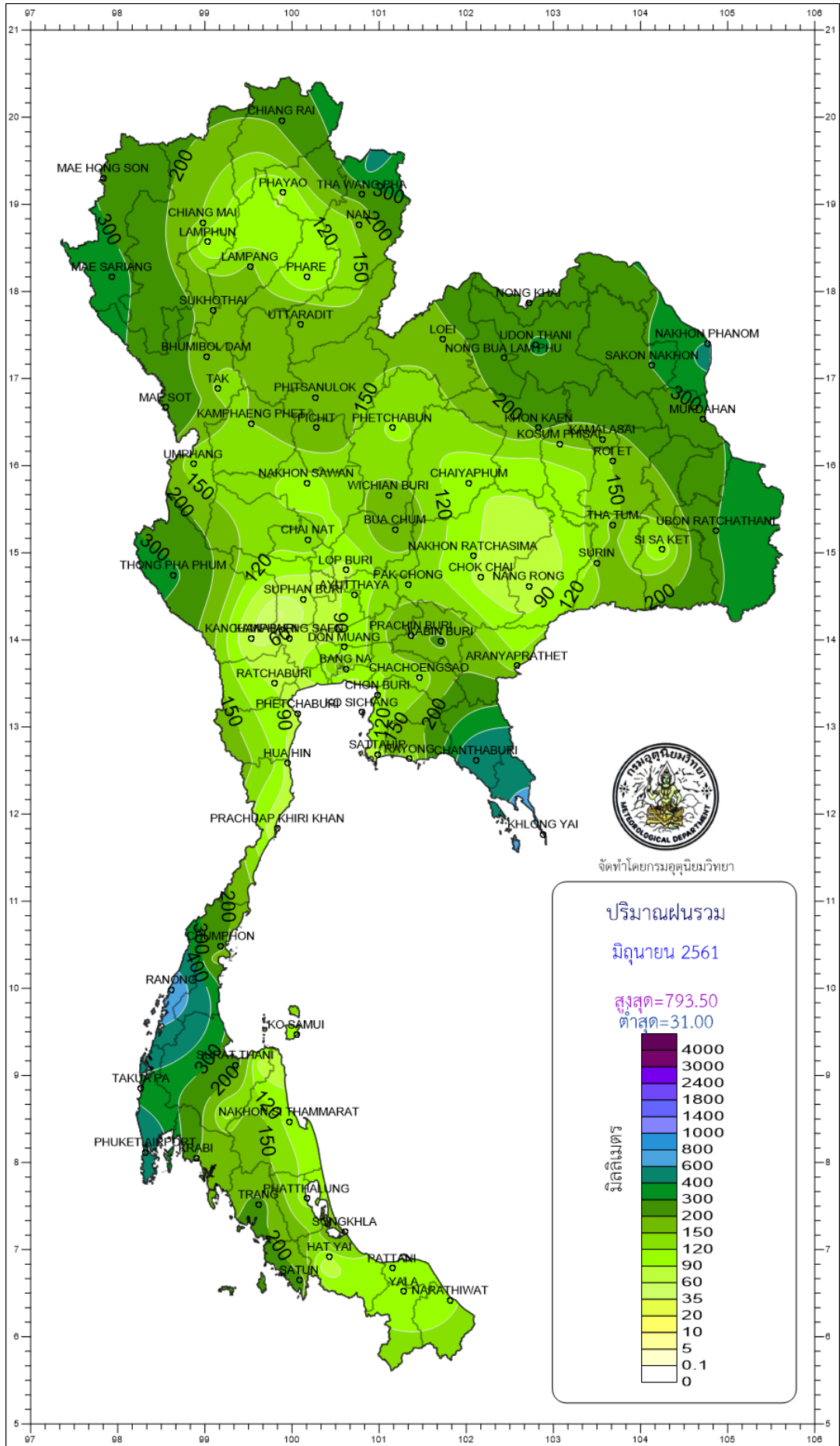
Southern Thailand, east coast

Station	Temperature ( °c)		Rainfall (mm)		Accumulative rainfall (mm) Since 1 January	
	Mean	Above or below normal	Actual	Above or below normal	Actual	Above or below normal
Phetchaburi	29.5	0.5	80.4	-11.6	381.6	104.8
Hua Hin	29.0	0.0	78.5	-0.4	457.7	142.5
Prachuap Khiri Khan	28.3	-0.1	66.6	-19.6	396.8	10.2
Chumphon	27.7	0.1	215.1	47.9	740.6	95.5
Surat Thani	27.3	-0.3	227.7	102.7	769.4	319.9
Ko Samui	28.5	-0.2	107.2	-16.9	738.6	154.1
Nakhon Si Thammarat	28.0	-0.2	110.0	-7.3	632.3	-69.1
Songkhla	28.5	-0.1	181.7	81.8	698.4	220.7
Hat Yai Airport	27.7	0.0	88.6	-30.7	542.4	3.5
Pattani Airport	28.1	0.2	93.4	-16.0	643.9	190.1
Narathiwat	28.1	0.2	114.4	-8.8	943.5	332.7
Over the area	28.2	0.0	124.0	11.0 10%	631.4	136.7 28%

Southern Thailand, west coast

Station	Temperature ( °c)		Rainfall (mm)		Accumulative rainfall (mm) Since 1 January	
	Mean	Above or below normal	Actual	Above or below normal	Actual	Above or below normal
Ranong	27.1	-0.2	793.5	144.1	1658.5	268.7
Takua Pa	27.5	-0.3	344.8	-79.4	1622.3	355.5
Phuket	28.3	-0.3	409.6	196.3	912.1	168.7
Phuket Airport	28.2	-0.1	589.6	332.8	1506.1	650.1
Ko Lanta	28.4	-0.1	159.9	-98.6	855.1	137.4
Trang Airport	27.6	0.2	218.6	17.5	803.3	108.3
Satun	27.9	0.1	224.3	40.8	768.9	-42.9
Over the area	27.9	-0.1	391.5	79.1 25%	1160.9	235.1 25%

- NOTES :
- 1) Mean temperature is the average of daily dry-bulb temperature
  - 2) "T" is trace, rainfall amount less than 0.1 mm.
  - 3) "blank" is incomplete data.
  - 4) Temperature and rainfall are preliminary data.



จัดทำโดยกรมอุตุนิยมวิทยา

